

# HOBAS

HOBAS PIPE USA

## Technical Advice Sheet

---

### Closure Coupling Installation

---

#### Introduction:

Many times a contractor is faced with having to install or replace a short section of pipe in a previously placed line or to close a gap between installed pipes, such as shafts. HOBAS PIPE manufactures a closure coupling for this purpose for use in non-pressure applications.

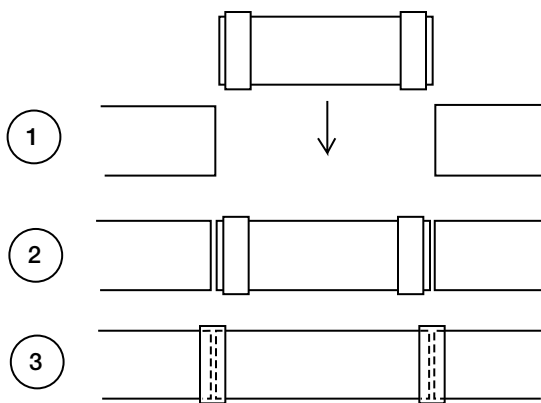
#### General:

The HOBAS closure coupling is a straight, loose fiberglass collar with a gasket confined in a groove on the inside surfaces near both edges. The joint seals by compressing the gaskets between the unmachined outside surface of any HOBAS pipe and the inside of the collar.

If in doubt, seek advice from:  
**HOBAS PIPE USA**  
800-856-7473

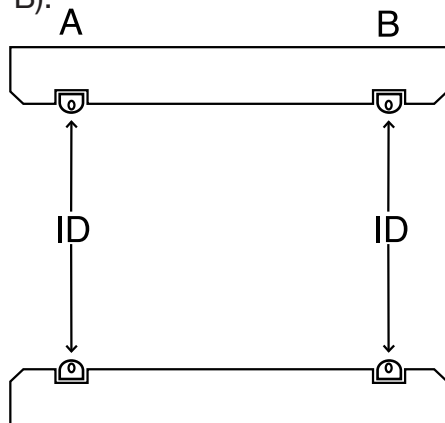
## Installation and Assembly

1. Cut closure pipe to the required length. Push or pull a closure coupling completely onto both ends of the closure pipe.
2. Place the closure pipe into position in the line.
3. Slide both closure couplings until they are centered over the joint gaps, sealing the line.



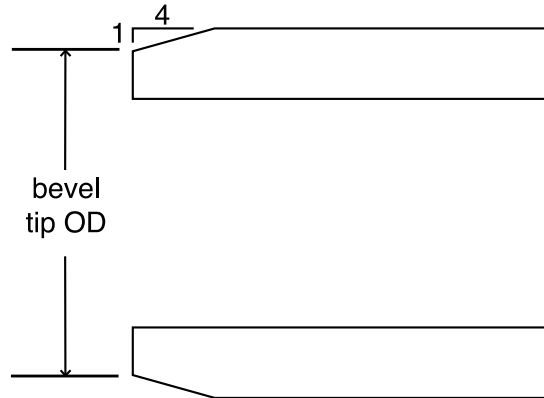
### To Assist in Assembly:

1. Measure ID at the highest point (smallest ID) of each gasket (A & B).



2. Bevel pipe ends
  - a. OD at bevel tip must be smaller than ID at highest point (smallest ID) of each gasket (A & B).

- b. Bevel should be plane (flat, not curved) with a slope of 4 axial to 1 radial, or flatter



3. Assembly is easiest if the pipes being joined are aligned straight.

NOTE: To make a closure in a force main or other pressure application, utilize mechanical couplings such as manufactured by Dresser or Viking-Johnson. HOBAS pipe OD matches ductile iron pipe for standard sizes from 18 through 48 inch diameter.

If in doubt, seek advice from:

**HOBAS PIPE USA**  
**800-856-7473**